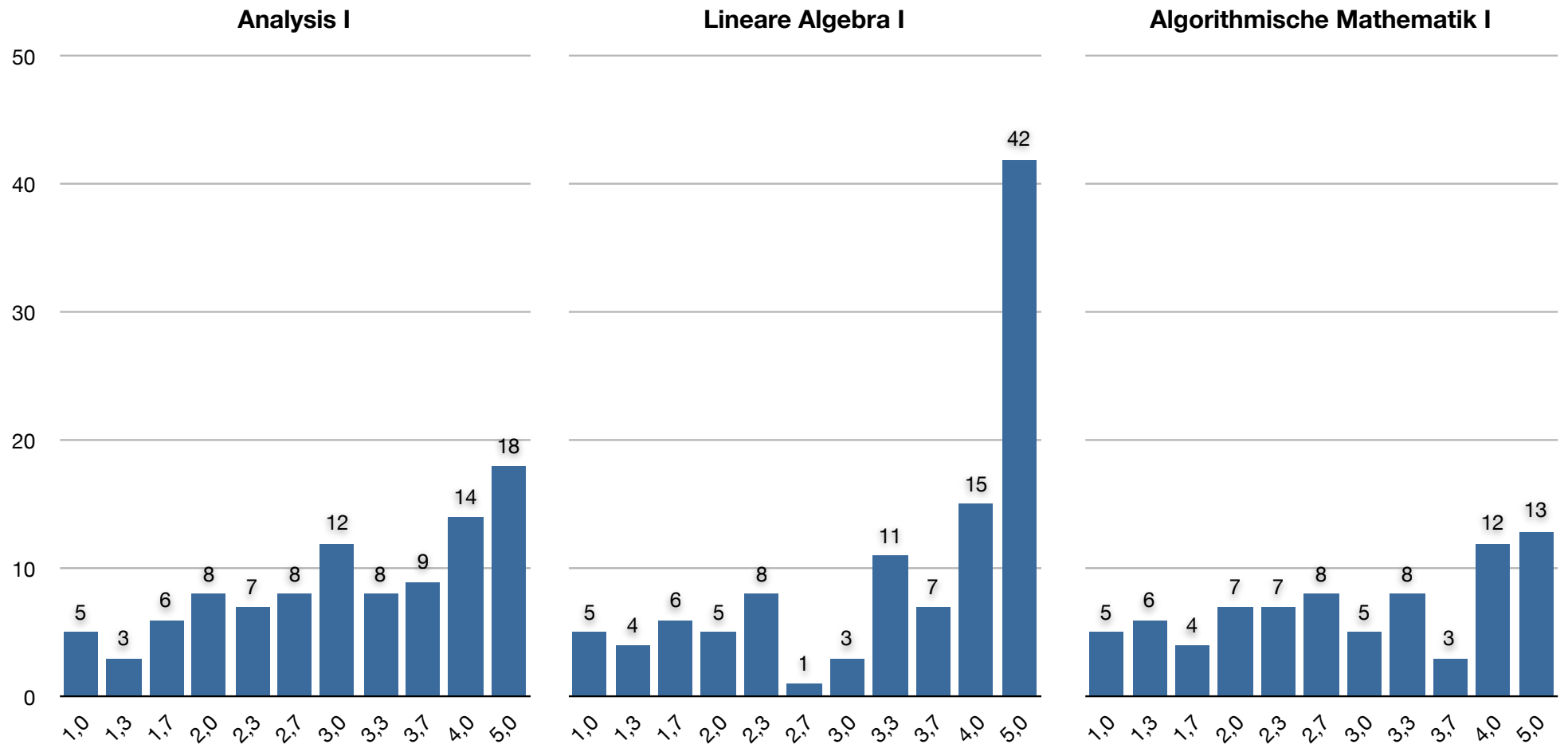
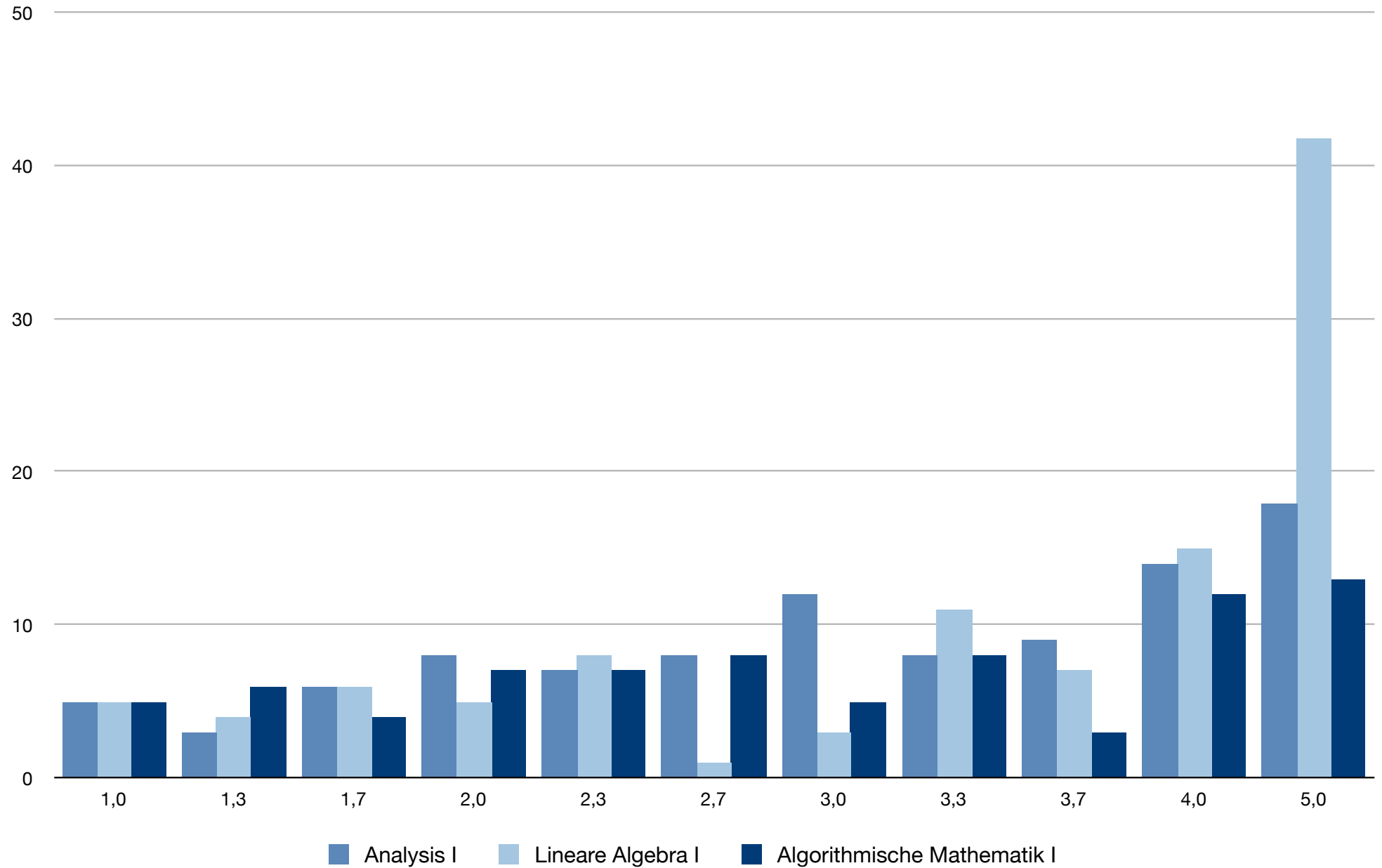


## Notenverteilung Nachklausur Mathematik WS 2007/08

Vorlesung	1,0	1,3	1,7	2,0	2,3	2,7	3,0	3,3	3,7	4,0	5,0	Ges.
Analysis I	5	3	6	8	7	8	12	8	9	14	18	98
Lineare Algebra I	5	4	6	5	8	1	3	11	7	15	42	107
Algorithmische Mathematik I	5	6	4	7	7	8	5	8	3	12	13	78
Durchschnitt	5,3%	4,6%	5,7%	7,1%	7,8%	6,0%	7,1%	9,5%	6,7%	14,5%	25,8%	283



## Vergleich

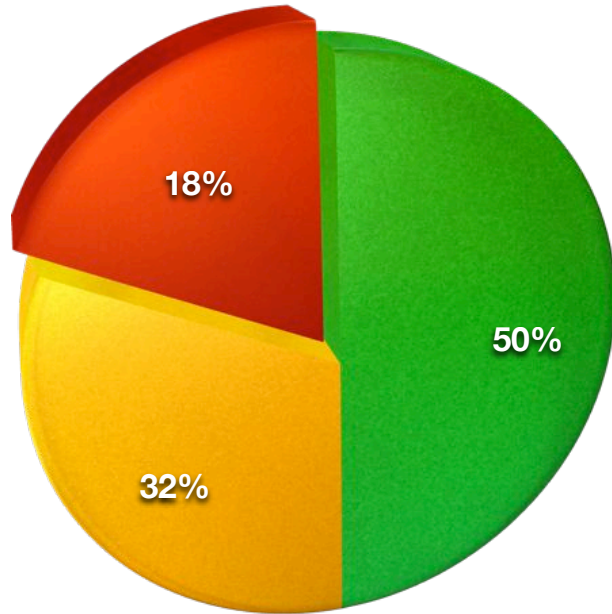


● 1,0 – 3,0

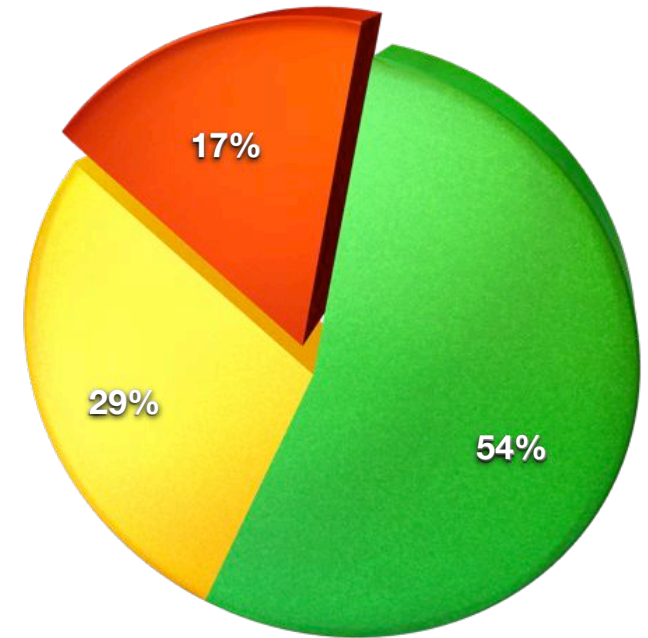
● 3,3 – 4,0

● nicht bestanden

**Analysis I**



**Algorithmische Mathematik I**



**Durchfallquote**

**Lineare Algebra I**

